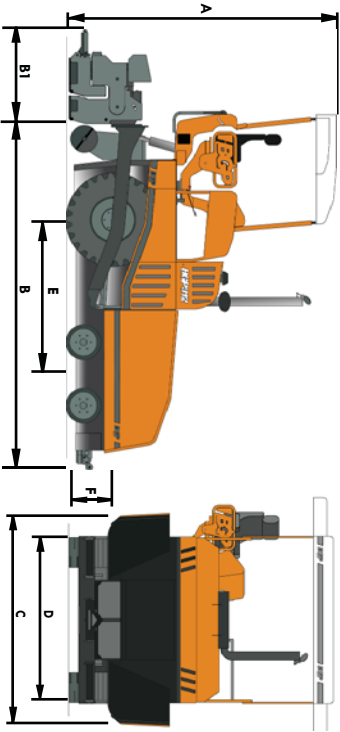


Specification

Drive - Standard Engine:	
Engine Model	JCB Dieselmix Tier 5
Engine Power	129kW / 173hp
Engine Cooling	Water Cooled
Engine Fuel	Diesel
Paving Widths - HDTV25-50	
Standard hydraulic paving width closed	2.5 metres
Standard hydraulic paving width open	5.0 metres
Basic width open + mechanical extensions	10.0 metres
Paving Widths - HDTV30-60	
Standard hydraulic paving width closed	3.0 metres
Standard hydraulic paving width open	6.0 metres
Basic width open + mechanical extensions	11.0 metres
Capacities	
Hopper Capacity	13.5 Tonnes
Hydraulic System	420 Ltrs
Fuel Tank	300 Ltrs
Material Throughput	
Production Rate	720 Tonnes per hour
Paving Depth	0 - 300mm
Speeds	
Travel Speed	0 - 19 km/hr
Paving Speed	0 - 42 m/min
Dimensions	
Length (Tractor unit only - Dimension B)	5.30 metres
Length (With HDTV Screed - Dimension B + B1)	6.40 metres
Operating Width (Dimension C)	3.23 metres
Operating Height (Dimension A)	3.66 metres
External Of Tracks (Dimension D)	2.30 metres
Track Centres (Dimension E)	3.15 metres
Truck Entry Dimensions	
Height Centre	420mm
Hopper Floor	620mm
Shipping Dimensions	
Shipping Height	2.48 metres
Shipping Width	2.50 / 3.0 metres
Weight	
With HDTV25-50 - Base unit	18,300 Kg +
With HDTV30-60 - Base unit	19,800 Kg +



A	Minimum Height	B	Length	B + B1	Length	C	Width	D	Track Base	D	Wheel Base	E	Track Centres	E	Axle Base	F	Truck Entry		
Operating 3.2m		Tractor Unit Only		With HDTV25-50 Screed		Operating 3.23m		External Of Tracks		External of Drive Tyres		Track Centres		Centres		Height Centre 420mm		With HDTV25-50 Screed	Weight
Shipping 2.48m						Shipping 2.50m		2.30m		2.34m		3.15m		2.47m		Hopper Floor 620mm		18,300 Kg	Weight
																		With HDTV30-60 Screed	Weight
																		19,800 Kg	

ANTICIPATING YOUR TOMORROW

BGP
317-C17
THE PURSUIT OF EXCELLENCE



Power Unit:	129kW / 173hp JCB Dieselmix Tier 5
Paving Width:	2.5 - 5.0 metres hydraulic (Maximum 10.0 metres)
Optional Paving Width:	3.0 - 6.0 metres hydraulic (Maximum 11.0 metres)
Weight:	17 - 26 Tonnes (Unladen)
Productivity:	720 Tonnes per hour



Product improvement is a continous goal at BGPavers. Designs and specifications are subject to change without notice or obligation

BGP Group ... Higher Walton ... Preston ... England ... PR5 4DZ

Tel: +44 (0) 1772 697007

Fax: +44 (0) 1772 697067

E-mail: info@bgp-group.co.uk

Website: www.bgp-group.co.uk

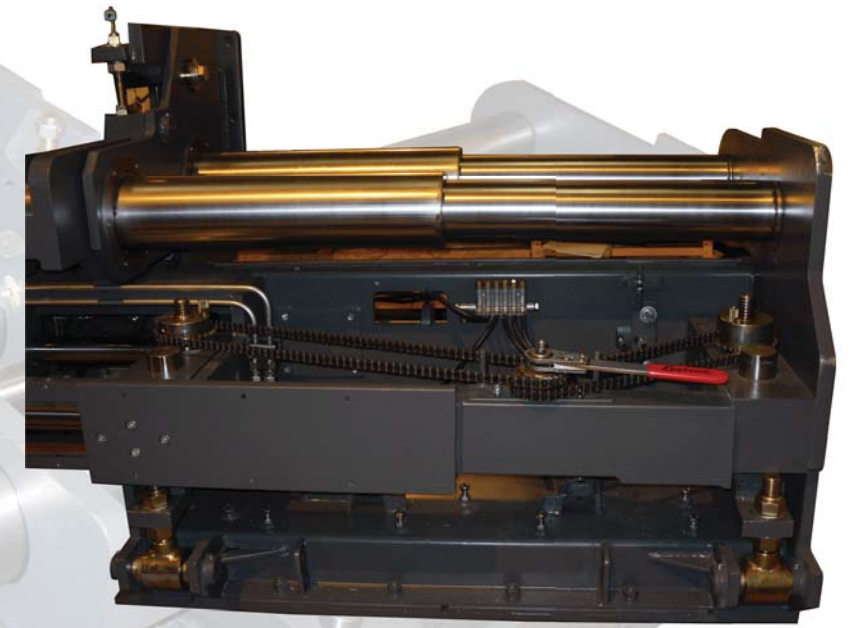


*We reserve the right to alter or amend our equipment without prior notification. This brochure is neither warranty expressed or implied.

317/C17



Rapid, simple and easy screed extension height adjustment is a real benefit of the HDTV screed unit. No tools are necessary to effect on the move trimming of the screed extensions. Precision performance is easy work from the clutch driven height adjusting jack units.



Assured and precise lubrication comes as standard on the HDTV screed unit. Automatic centralised time scheduled greasing on the tamper and vibrator circuits provides the precise amount required at the correct working intervals.



Features & Benefits

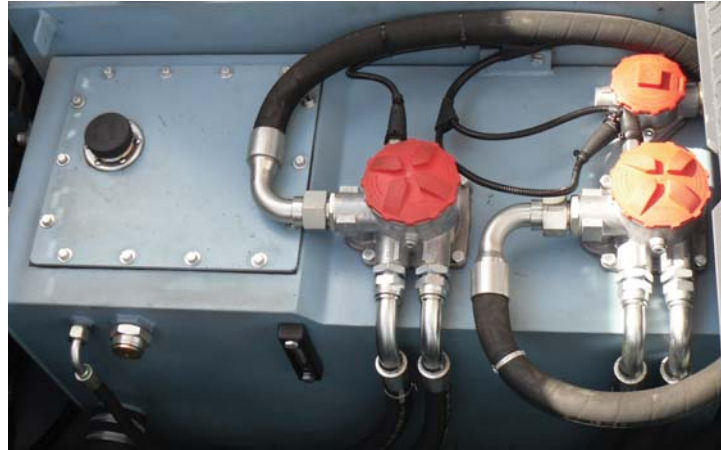
- * The BGP 317/C17 is a powerful highway class, high productivity paver equipped with a High Density Screed performance to match.
- * High performance engine - Impressive length track under carriage / Supersized dimensioned Drive Tyre coupled with large volume material throughput to the substantial sized Auger section are all suited to ensuring the BGP 317/C17 delivers on productivity.
- * Operator and maintenance considerations feature at the top of the BGP 317/C17 design and build, resulting in an assured and complete user friendly machine that is at one with its operators and maintenance crew.



Twin - Large diameter - Wide centres screed extensions support tubes provide extension stability whilst maintaining uniform screed extension alignment.

Hydraulic System

With a hydraulic system capacity of 420 ltrs, generously sized hydraulic oil cooler and with each and every hydraulic circuit filtered, hydraulic performance and reliability is totally assured in the toughest of site conditions. Easy access to all hydraulic filter elements with operator console warning indicators of filter element conditions highlights when the element replacements are necessary.



Impressive Undercarriage

Automatic hydraulic crawler track chain tension, 11 sealed for life oil lubricated support rollers mounted to a heavy duty constructed undercarriage provides an impressive undercarriage length, with excellent machine stability resulting in low ground bearing pressure.



Supersize Drive Tyres

Supersize 1800 R25 Drive Tyres complete the impressive traction capabilities of the 317 unit. Automatic timed control differential lock feature maximises the traction when the paving operation commences.



Maintenance

Simple and easy service access is high on the priority list of the BGP 317/C17. Large access panels, pop up hydraulic manifold valves and pull out electrical ground box provide effective consideration to service access. Keeping it simple and easy to access ensures servicing is neither time consuming, costly, or difficult to perform.



The Pursuit Of Excellence

- ▶ Practical
- ▶ Simplicity
- ▶ Balance
- ▶ Precision
- ▶ Performance

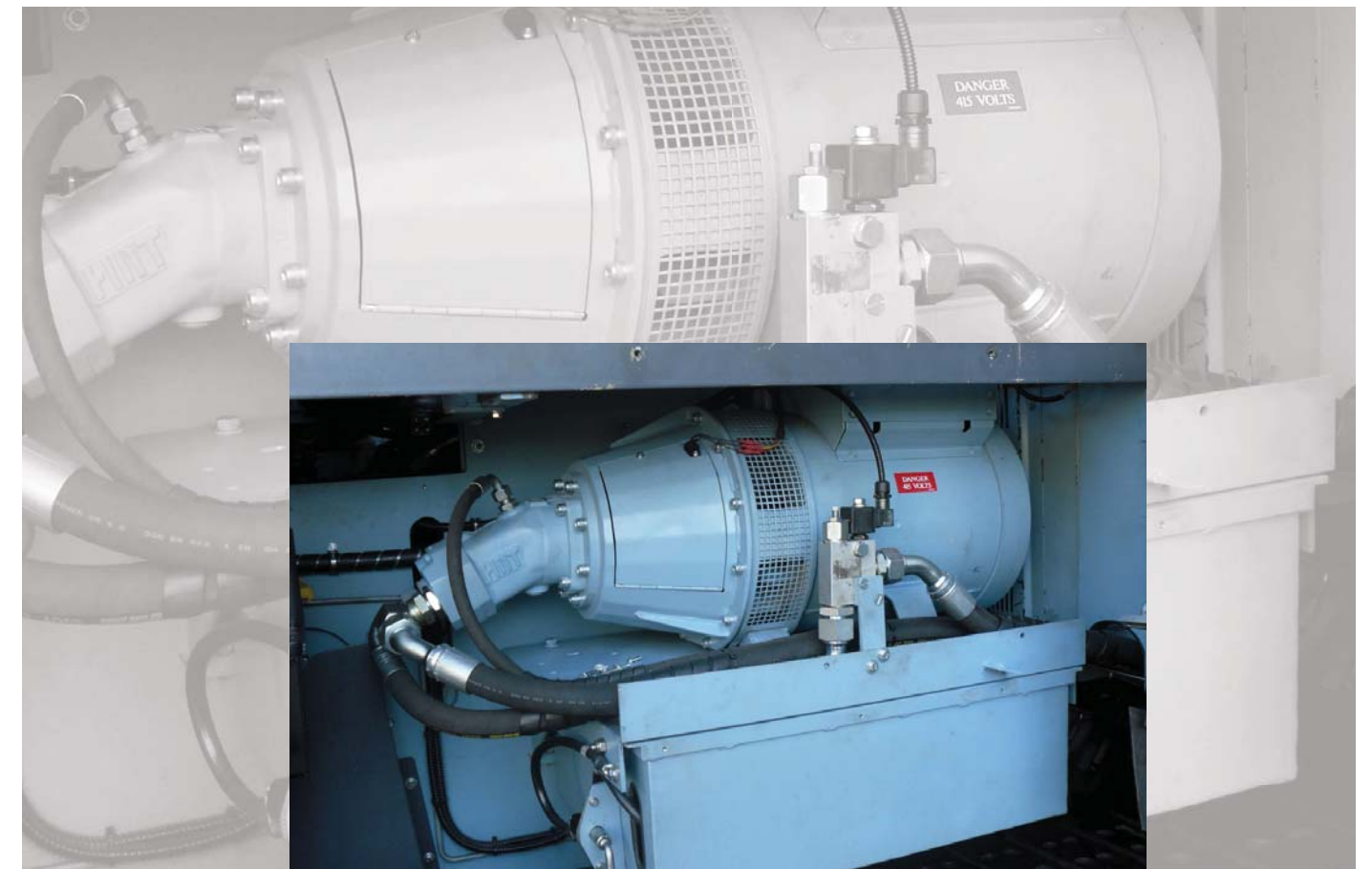


Precision performance with assured, balance and stability are evident when operating the HDTV screed unit. With a screed weight to surface area ratio at optimum level the HDTV screed delivers long term precision performance whatever the demands are placed upon it.

Powerful, Efficient and Emissions Compliant



The BGP 317/C17 is available to be equipped with a water, air after cooled JCB diesel engine unit that produces up to 129kW (173hp). Efficient design with direct fuel injection system results in lower exhaust emissions.



The ample sized generator provides for speedy screed heating. Direct coupled hydraulic drive of the generator eliminates the use of drive belts and the need for regular adjustments and belt replacement.

Operator Comfort

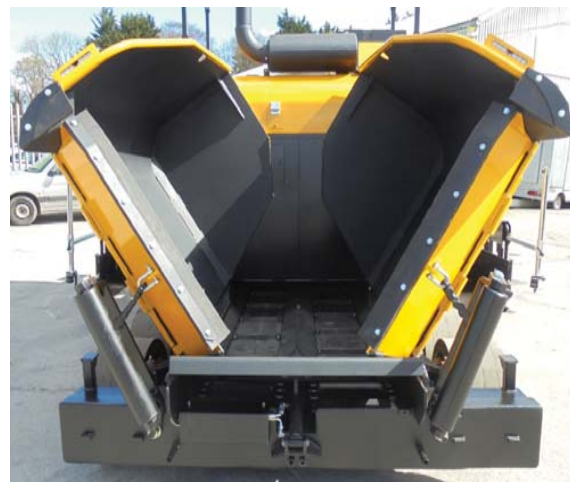
From the deluxe operator seating, extending sun canopy, pivot seating position, tilt console display and simple operator friendly switch layout, it is evident that the BGP 317/C17 is a very user friendly machine, and that operator comfort and ease of operation is an important feature and consideration of the BGP317/C17 unit.



Sliding Seat Console

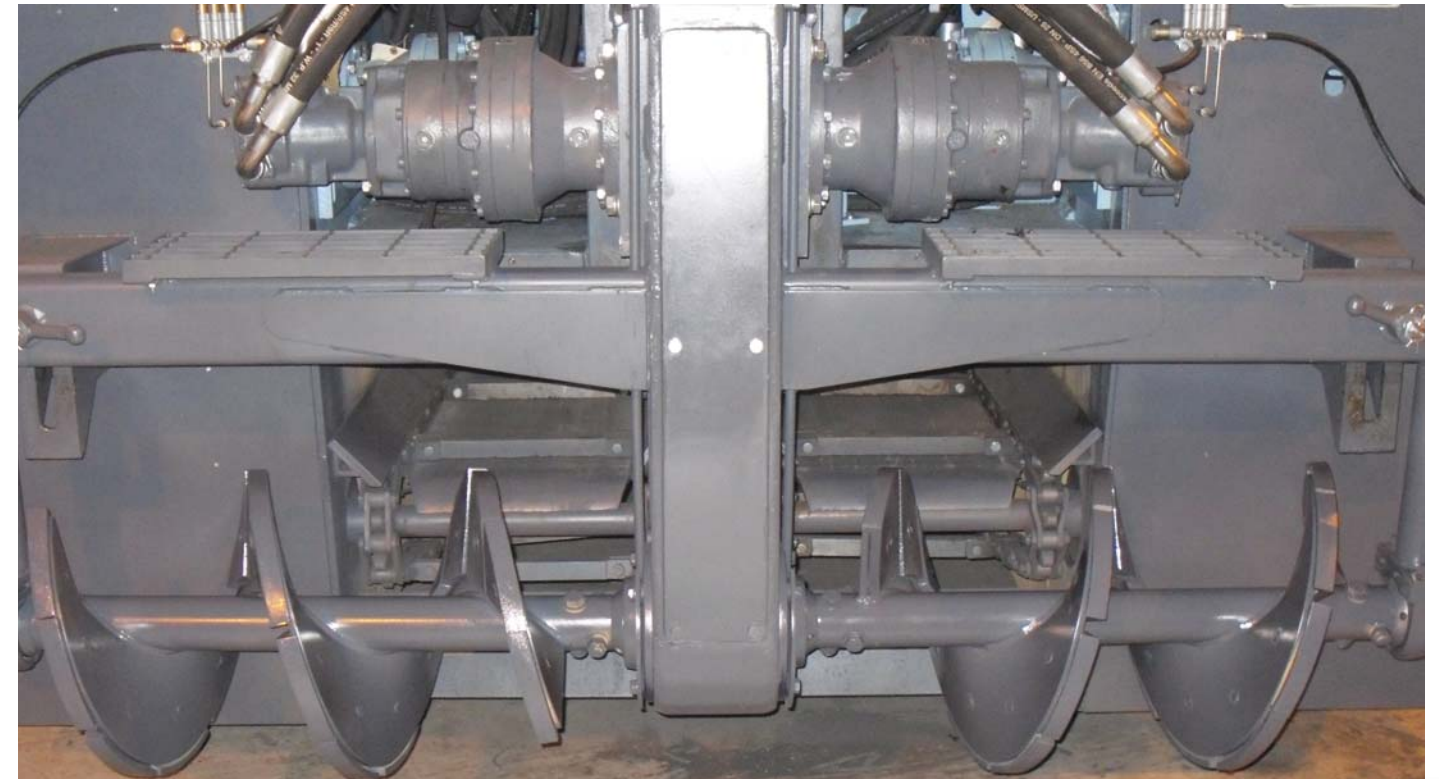
The power slide operators console which also pivots to provide fatigue free comfort and excellent operator visibility to all key paving areas is an important operational benefit of the BGP 317/C17 unit. Traversing the operators console across the width of the machine is a simple flick switch function which requires no effort.

Hinged Self Cleaning Hydraulic Apron Plate



Independent switch operated hinged hopper front apron plate prevents material spillage out of the front receiving hopper, benefitting overall machine screed level control whilst enhancing operator safety by significantly reducing manual clearing of material residue in the front receiving hopper area. LED safety lighting system ensures safe entry - exit from the delivery truck.

Assured Productivity



The combination Auger design of a continuous steel spiral, shielded with the Hi Chrome Ni hard replaceable wear pads provides prolonged service life, reducing wear part replacement costs and improved reliability. With an overall substantial Auger diameter of 450mm the important head of material flow is proportional precise and consistent.



Deep conveyor tunnel depth and proportional conveyor speed ensures high volume and precise material throughput is maintained. Utilising Hardox conveyor floor wear material and adjustable conveyor side and centre guards optimises conveyor wear component life.

